



**BENCHWORK**

P.O. Box 100 - 986 Jackson Harbor Road - Washington Island, WI 54246  
 Phone (920) 847-2264 Fax (920) 847-2676  
 E-mail: mail@sieversbenchwork.com • www.sieversbenchwork.com

Ship To:

**ORDER BLANK**

Effective August 2015

Date \_\_\_\_\_

Telephone \_\_\_\_\_

E-mail: \_\_\_\_\_

Catalog No.	Quantity	Description	Price Each	Total
3648		36" x 48" Section	76.35	
3636		36" x 36" Section	67.75	
3630		36" x 30" Section	67.75	
3624		36" x 24" Section	55.95	
3616		36" x 16" Section	43.10	
L-36		Leg Assembly Unit: L36 Brace, 40" Legs/48" Legs	31.10/33.90	
3048		30" x 48" Section	65.10	
3036		30" x 36" Section	56.55	
3030		30" x 30" Section	56.55	
3024		30" x 24" Section	45.45	
3016		30" x 16" Section	34.25	
L-30		Leg Assembly Unit: L30 Brace, 40" Legs/48" Legs	30.95/33.85	
2448		24" x 48" Section	57.55	
2436		24" x 36" Section	48.75	
2430		24" x 30" Section	48.75	
2424		24" x 24" Section	38.65	
2416		24" x 16" Section	29.00	
L-24		Leg Assembly Unit: L24 Brace, 40" Legs/48" Legs	30.70/33.60	
2048		20" x 48" Section	52.70	
2036		20" x 36" Section	45.25	
2030		20" x 30" Section	45.25	
2024		20" x 24" Section	35.60	
2016		20" x 16" Section	26.85	
L-20		Leg Assembly Unit: L20 Brace, 40" Legs/48" Legs	30.65/33.55	
1848		18" x 48" Section	49.90	
1836		18" x 36" Section	42.45	
1830		18" x 30" Section	42.45	
1824		18" x 24" Section	33.60	
1816		18" x 16" Section	25.40	
L-18		Leg Assembly Unit: L18 Brace, 40" Legs/48" Legs	30.60/33.50	
1648		16" x 48" Section	47.25	
1636		16" x 36" Section	40.00	
1630		16" x 30" Section	40.00	
1624		16" x 24" Section	31.10	
1616		16" x 16" Section	23.35	
L-16		Leg Assembly Unit: L16 Brace, 40" Legs/48" Legs	30.55/33.45	
1248		12" x 48" Section	41.60	
1236		12" x 36" Section	35.60	
1230		12" x 30" Section	35.60	
1224		12" x 24" Section	27.20	
1216		12" x 16" Section	18.10	
L-12		Leg Assembly Unit: L12 Brace, 40" Legs/48" Legs	30.35/33.15	
3045A		30" 45° Angle Section	34.35	
3030A		30" 30° Angle Section	30.75	
2445A		24" 45° Angle Section	24.85	
2430A		24" 30° Angle Section	22.90	
2045A		20" 45° Angle Section	23.35	
2030A		20" 30° Angle Section	22.00	
1845A		18" 45° Angle Section	22.45	
1830A		18" 30° Angle Section	21.35	
1645A		16" 45° Angle Section	21.75	
1630A		16" 30° Angle Section	20.75	
1245A		12" 45° Angle Section	16.25	
1230A		12" 30° Angle Section	15.15	
R-4		7½" Risers, Pkg. of 10	14.85	
R-6		9½" Risers, Pkg. of 10	15.60	
R-8		11½" Risers, Pkg. of 10	16.50	
R-10		13½" Risers, Pkg. of 10	17.40	
EX-6		6" L-Girder	4.50	
EX-8		8" L-Girder	4.50	
EX-12		12" L-Girder	4.50	

Payment:  Check or Money Order Enclosed  
 Charge to my account:

Exp. Date \_\_\_\_\_  Debit  Credit  
 Signature \_\_\_\_\_

Shipment:  Prepaid U.P.S.  
 Prepaid U.S. Mail

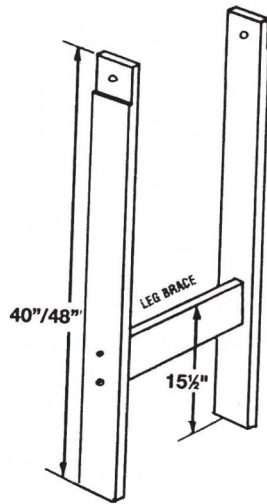
Benchwork Total	
5½% WI Sales Tax (Wisconsin Residents Only)	
Prepaid Shipping & Insurance (Est.) <b>(Minimum \$20.00)</b> Under \$100 add 25% Over \$100 add 20%	
<b>TOTAL</b>	

# HOW TO SELECT THE MODULES YOU NEED

With the Sievers Benchwork system, you are the designer. The PDF template sheets (available below) show you all the available modules, with the outside perimeter measurements in inches.

Begin by printing copies of the template sheets (heavy stock paper works best). Cut the individual Sections apart and use them in planning your table layout. Once you have completed that, calculate the placement of the Leg Assembly Units, spacing them approximately every 3 feet (see below). When this is completed, make a list of the Section sizes and numbers you have used, and you are finished-now you can place your order. You are on your way to getting your layout up and your train on the tracks. Happy railroading!

Note: The templates are drawn to a scale of  $3/4" = 1$  foot ( $1/16" = 1$  inch). However, because printers and type sizes differ, the templates you print out may be different from this scale. If you are using graph paper to design your layout and require accurate, "to scale" templates, please contact us and request a mailed brochure.



Leg Assembly Units should be spaced approximately every 3 feet in your layout

## LEG ASSEMBLY UNITS:

### 40" LEGS:

- L36 - \$31.10
- L30 - \$30.95
- L24 - \$30.70
- L20 - \$30.65
- L18 - \$30.60
- L16 - \$30.55
- L12 - \$30.35

### 48" LEGS:

- L36 - \$33.90
- L30 - \$33.85
- L24 - \$33.60
- L20 - \$33.50
- L18 - \$33.50
- L16 - \$33.45
- L12 - \$33.15

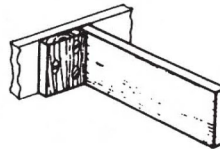
### RISER



### RISERS (Pack of 10):

- R-4 (7 1/2") \$14.85
- R-6 (9 1/2") \$15.60
- R-8 (11 1/2") \$16.50
- R-10 (13 1/2") \$17.40

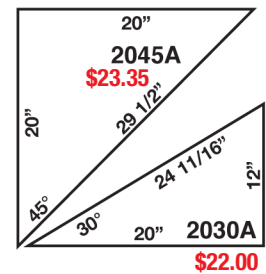
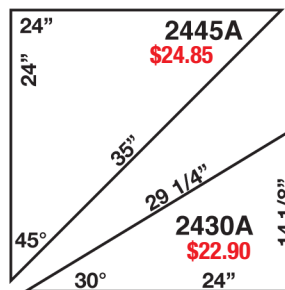
### L-GIRDER



### L-GIRDERS:

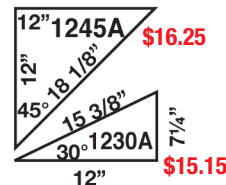
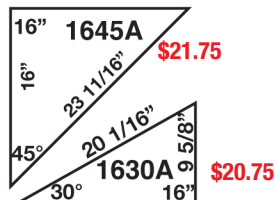
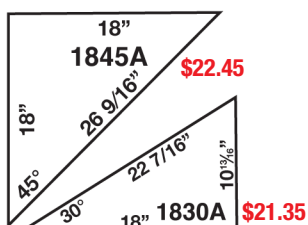
- EX-6 (6") \$4.50
- EX-8 (8") \$4.50
- EX-12 (12") \$4.50

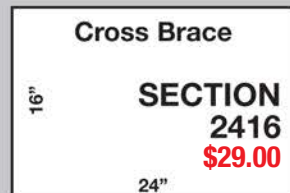
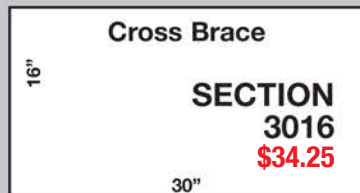
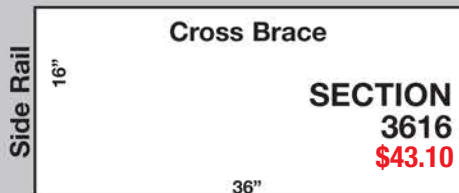
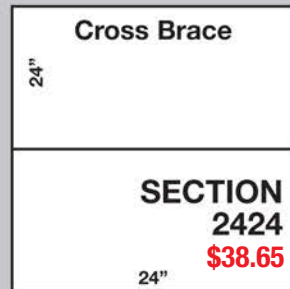
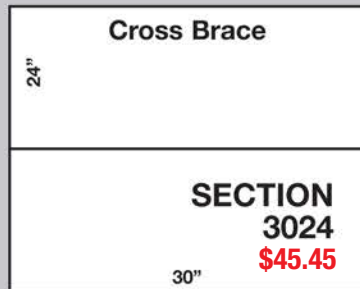
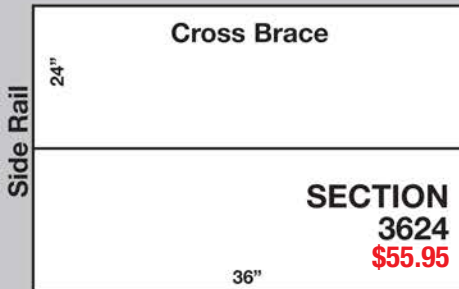
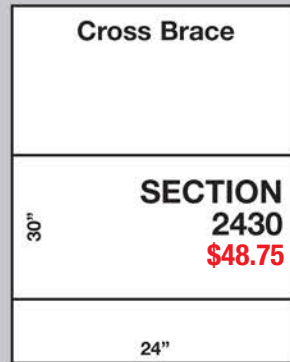
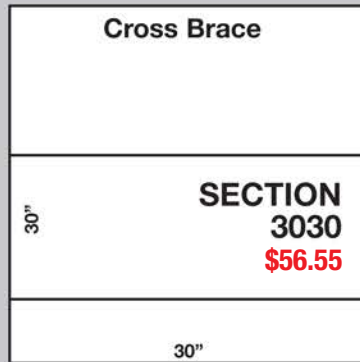
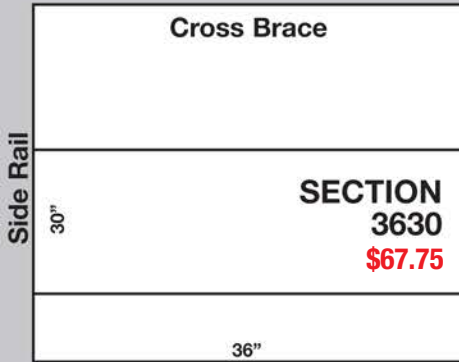
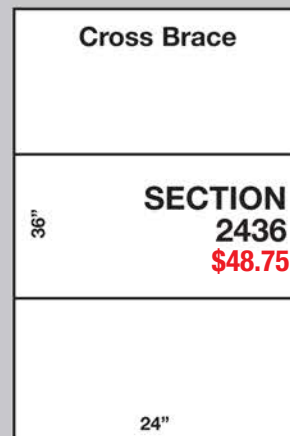
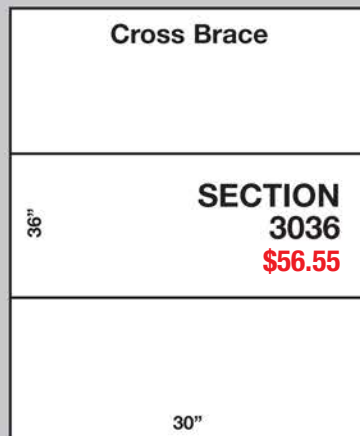
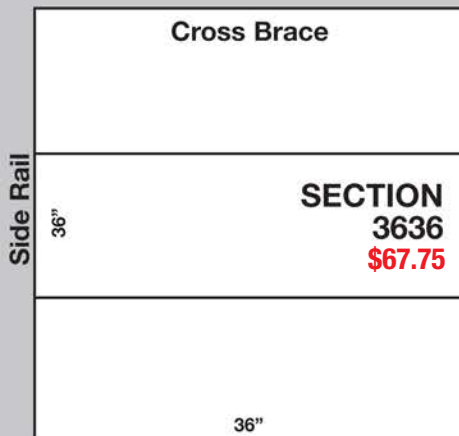
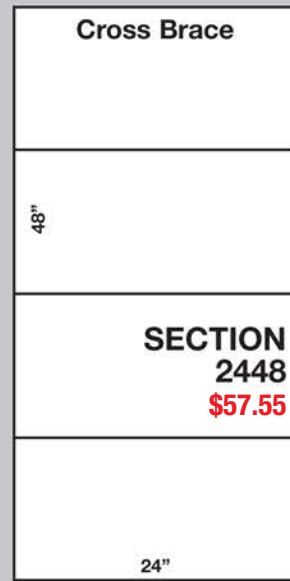
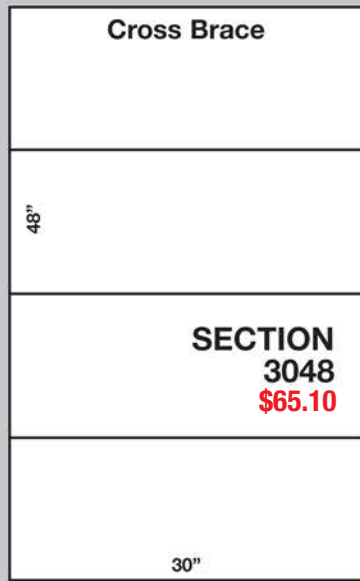
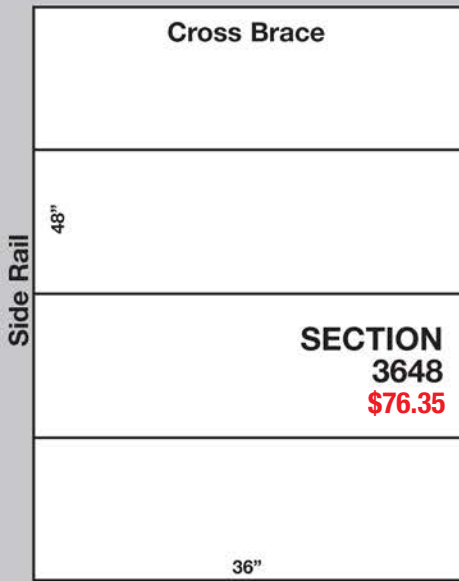
## 45° and 30° ANGLE SECTIONS



Scale: 3/4" on the drawing = 1 foot

All dimensions are 'outside' measurements





Scale: 3/4" on the drawing = 1 foot  
All dimensions are 'outside' measurements

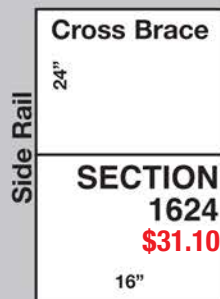
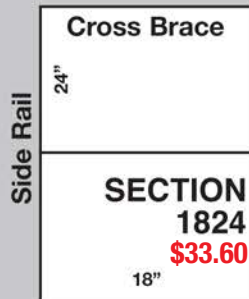
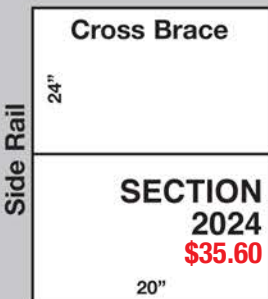
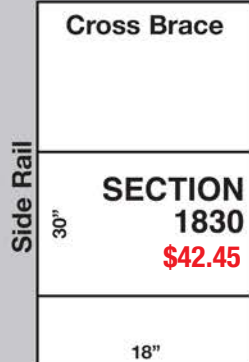
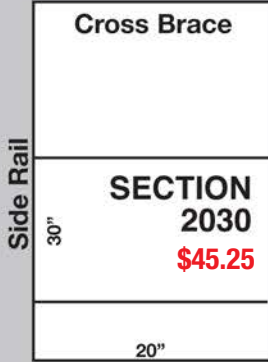
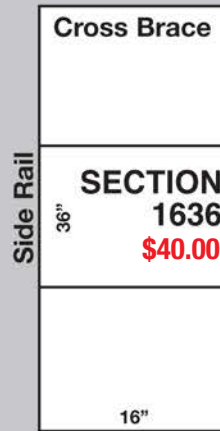
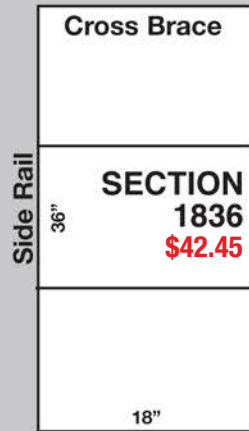
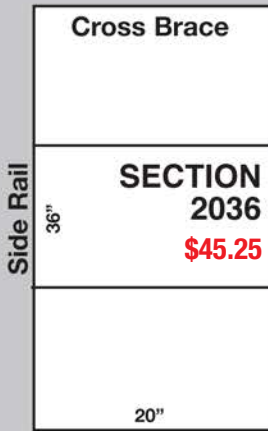
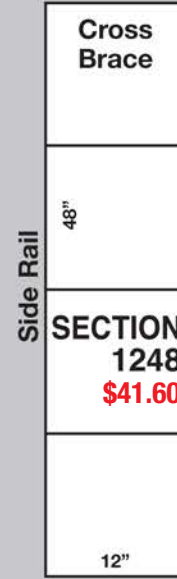
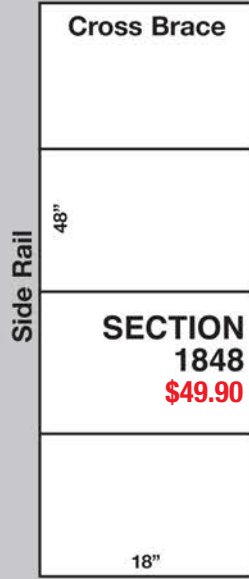
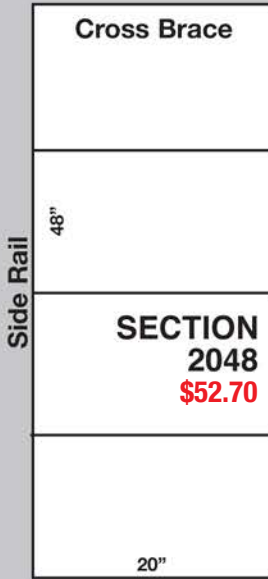
Leg Assembly Units should be spaced every 3 feet in your layout.

Template A



BENCHWORK

986 Jackson Harbor Road • Washington Island, WI 54246 • Phone (920) 847-2264



Scale: 3/4" on the drawing = 1 foot  
All dimensions are 'outside' measurements

Leg Assembly Units should be spaced every 3 feet in your layout.

Template B



BENCHWORK

986 Jackson Harbor Road • Washington Island, WI 54246 • Phone (920) 847-2264